



5:5 PROCEDURES FOR CRISIS MANAGEMENT:

• **YELLOW CRISIS**

e.g. a pupil, who is 'out of line' and at Step four on our Behaviour Management plan:

Refer Code Yellow flow chart strategy overleaf:

• **ORANGE CRISIS**

e.g. arrival, on site, of an inebriated/psychologically disturbed person;

or illness on site of a stakeholder: Board member, parent, pupil, staff member:

Refer Code Orange flow chart strategy:

• **RED CRISIS**

e.g. Pandemic

Refer *Procedure – Pandemic Plan* after Policy on Serious Illnesses

or Earthquake or Storm

Refer *Appropriate Procedure – following*

• **BLACK CRISIS**

eg. death on site of member of the school community

Refer Code Black flow chart strategy

Code Yellow:

- e.g. behavioural issue with pupil
- or* unfamiliar person in playground
- or* medical / accident
- or* access issue

Member of staff becomes aware of problem



Send for assistance to Office and / or Staffroom
Clear area of onlookers



Inform most senior
member of staff on site

In case of medical emergency / accident
call for
School Secretary



Assess situation



Follow First Aid
Protocol (**DRSABC***)
or
Call 111

Call for extra help
or
Go to Code Orange

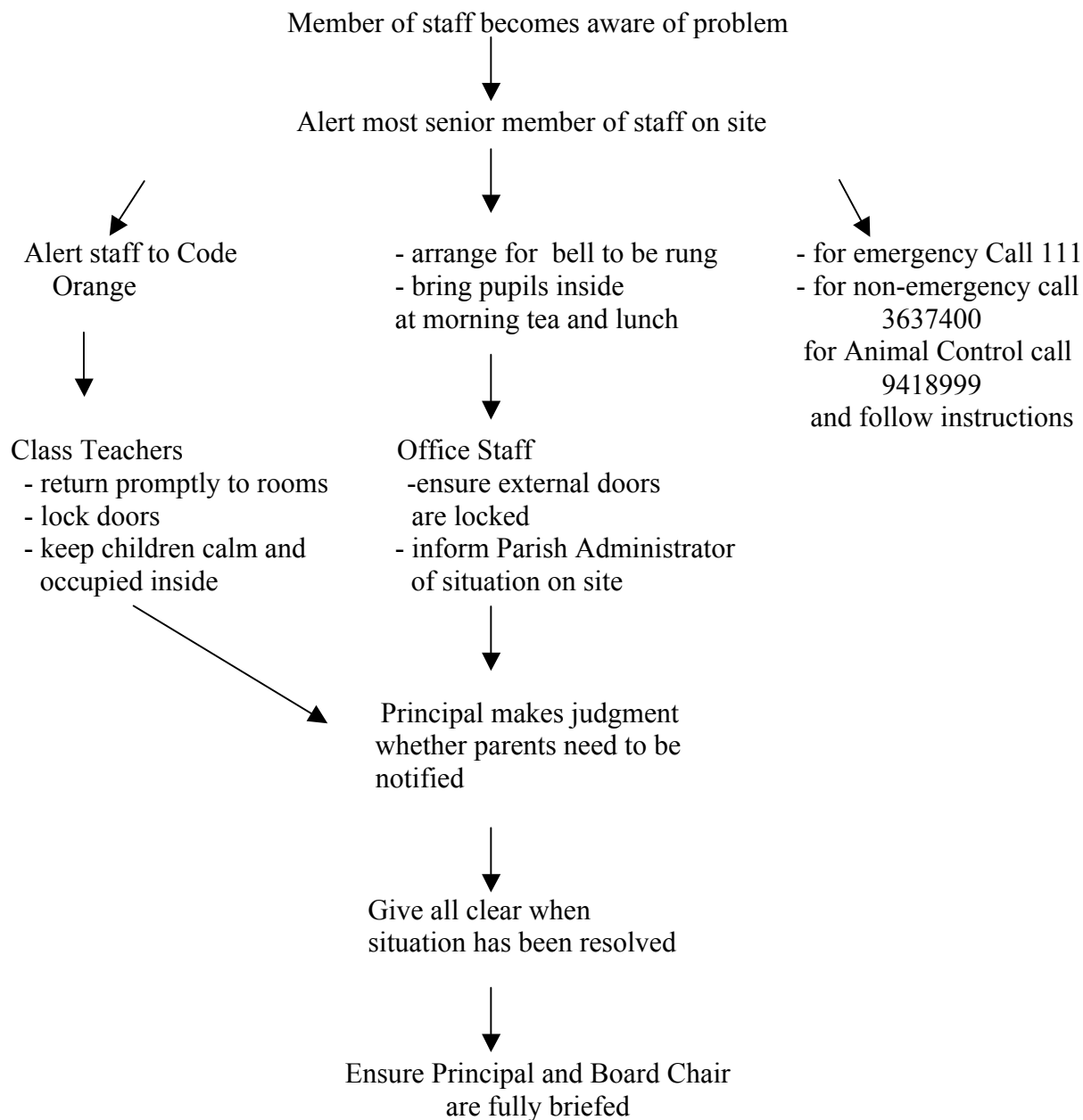
1. Record incident and witness statements if appropriate
2. Principal or Deputy Principal to inform parents, and class teacher if incident involves pupil(s)

***DRSABC** means

Dangers
Response
Send for help
open **A**irway
Breathing
Circulation (CPR Defibrillation)

Code Orange:

- e.g. arrival on site of inebriated or psychologically disturbed or violent person
or someone who is armed
or dog loose in the playground

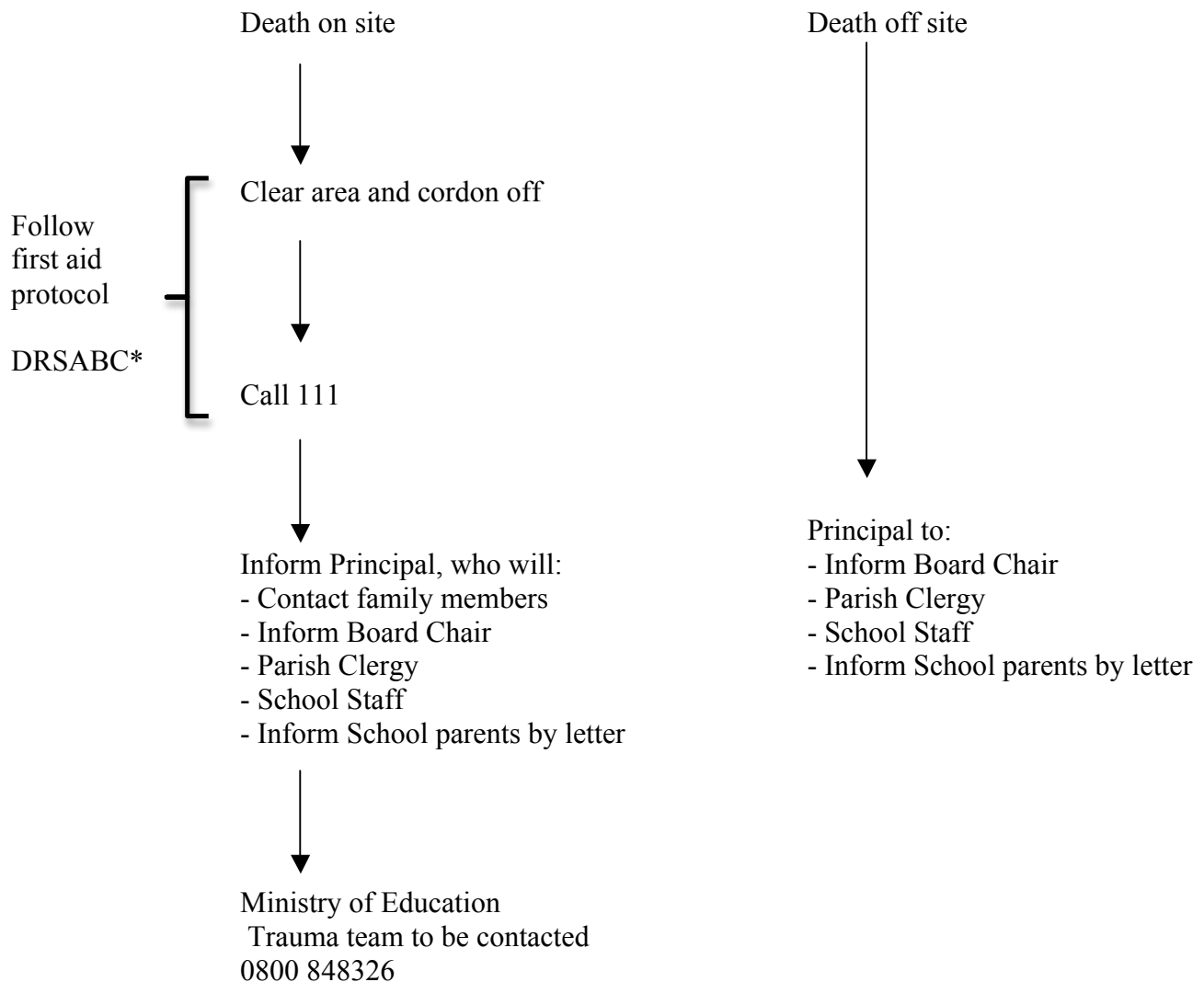


Code Red: - refer to procedures for –

- Earthquake
- Serious Illnesses
- Storm etc

Code Black:

Death on / off site of a member of the School Community



***DRSABC** means

Dangers
Response
Send for help
open **A**irway
Breathing
Circulation (CPR Defibrillation)